



GJS-2011

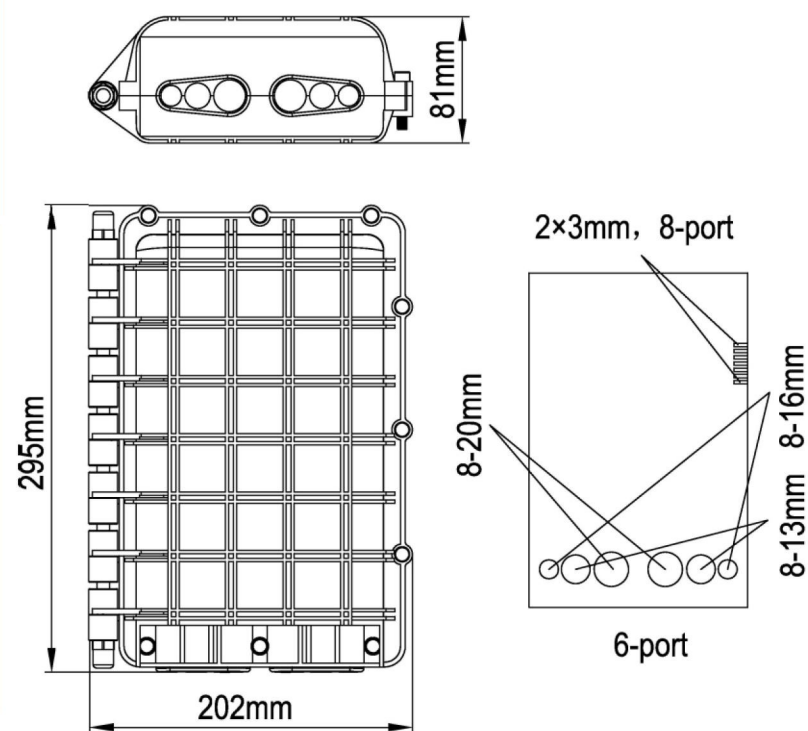
Features

- Advanced internal structure design
- Easy to re-enter, it never requires re-entry tool it
- The closure is spacious enough for winding and storing fibers
- Fiber Optic Splice Trays(FOSTs) are design in SLIDE-IN-LOCK and its opening angle is about 90°
- The curved diameter meets with international standard
- Easy and fast to increase and reduce FOSTs
- Straight-through for uncutting and branching for cutting the fiber
- There are 2*3 drop cable elements to be chosen Max. 16 pcs drop cable input/output
- It can be installed Max. One 1:8 blockless PLC splitter.
- Lay adaptors suit for FTTH and easy to operate

Applications

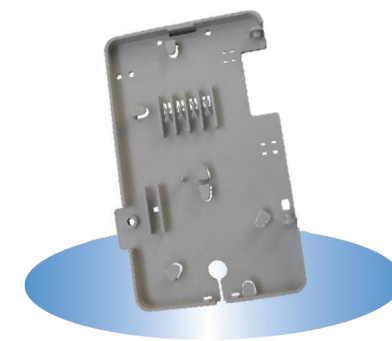
- ◆ Suitable for bunchy fibers
- ◆ Aerial, underground, wall-mounting, hand hole-mounting Pole-mounting and duct-mounting

Structural Drawing

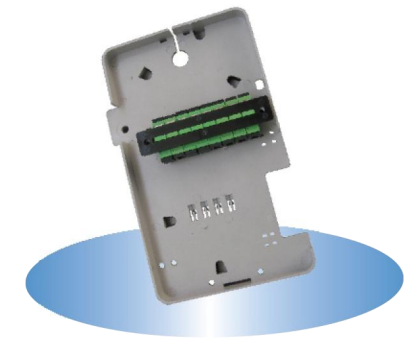


Ordering Information

Optical Splice Trays



Splitter tray
204X130X25mm




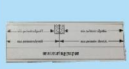



Wring tray
204X130X25mm

Type	Splice Capacity	Max. Adaptor Capacity	Splitter	Suitable Cable Dia. allowed(mm)
GJS-2011 (Bunchy)	8F	8 SC	1:8	2 round ports:13mm 2 round ports:16mm 2 round ports:20mm



Accessories


Standard Accessories:

No.	Name	Quantity	
1	Seal tape	1 roll	
2	Insulation tape	1 roll	
3	Abrasive cloth	1 pc	
4	Earthing wire	1 pc	
5	Nylon tie	1 bag	
6	Hanging hook	1 set	

No.	Name	Quantity	
7	Labeling paper	1 pc	
8	Measuring paper	1 pc	
9	Desiccant	2 bags	
10	Special wrench	1 pc	
11	Heat shrinkable protective sleeve	1 bag	

Optional Accessories:

No.	Name	Quantity	
1	Earthing deriving device	1 pc	
2	Buffer tube for bunchy fiber	1 roll	

No.	Name	Quantity	
3	Pole mounting bracket	1 set	
4	Wall mounting bracket	1 set	