



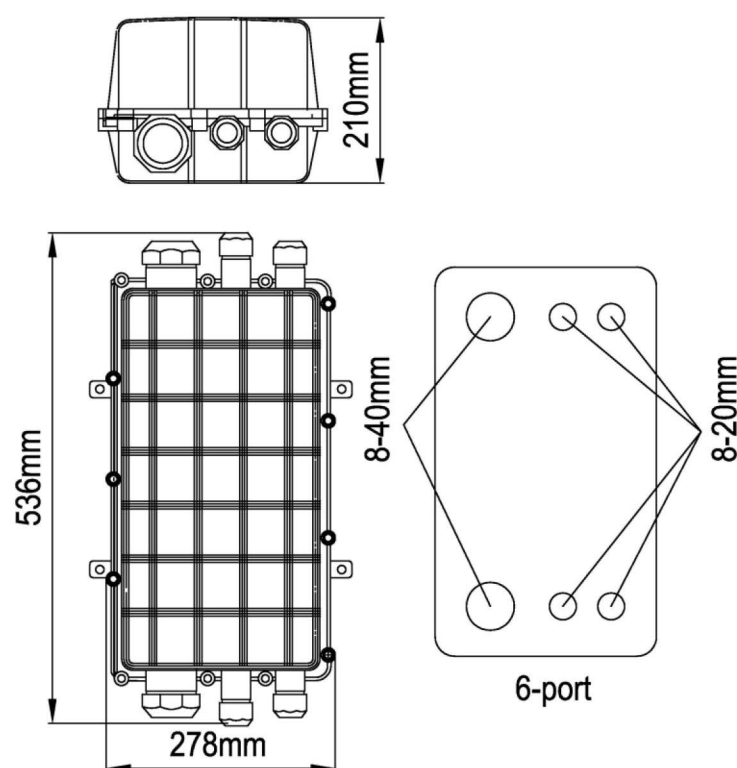
Features

- Advanced internal structure design
- Easy to re-enter, it never requires re-entry tool kit
- The closure is spacious enough for winding and storing fibers
- Fiber Optic Splice Trays (FOSTs) are designed in SLIDE-IN-LOCK and its opening angle is about 90°
- The curved diameter meets with international standard
- Easy and fast to increase and reduce FOSTs
- Straight-through for uncutting and branching for cut

Applications

- ◆ Suitable for bunchy & ribbon fibers
- ◆ Aerial, underground, wall-mounting, hand hole-mounting and duct-mounting

Structural Drawing



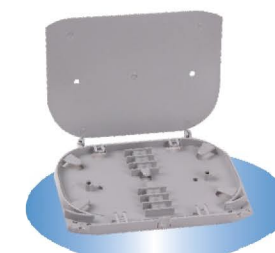
GJS-9005

Ordering Information

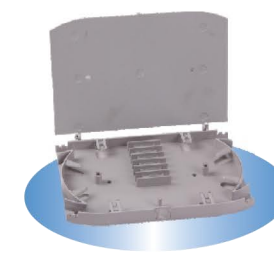
Optical Splice Trays



#018
160X122X7.5mm



#002
160X122X10mm



#004
180X120X14mm






Type	Fibers/Tray	Max. Capacity	Tray#	Suitable Cable Dia. allowed(mm)
GJS-9005 I(Bunchy)	12F	120	018	4 round ports:20mm 2 round ports:40mm
GJS-9005 II(Bunchy)	12-24F	288	002	
GJS-9005 III(Ribbon)	72F	576	004	

Accessories

Standard Accessories:

No.	Name	Quantity		No.	Name	Quantity	
1	Seal tape	1 roll		6	Desiccant	2 bags	
2	Labeling paper	1 pc		7	Heat shrinkable protective sleeve	1 bag	
3	Abrasive cloth	1 pc		8	Special wrench	2 pcs	
4	Earthing wire	2pc		9	Hanging hook	1 set	
5	Nylon tie	1 set		10	Hexagon wrench	2 pcs	

Optional Accessories:

No.	Name	Quantity		No.	Name	Quantity	
1	Pressure testing valve	1 pc		4	Buffer tube for ribbon fiber	1 roll	
2	Earthing deriving device	1 pc		5	Wall mounting	1 set	
3	Buffer tube for bunchy fiber	1 roll		6	Metal wrench (large size)	1 pc	