



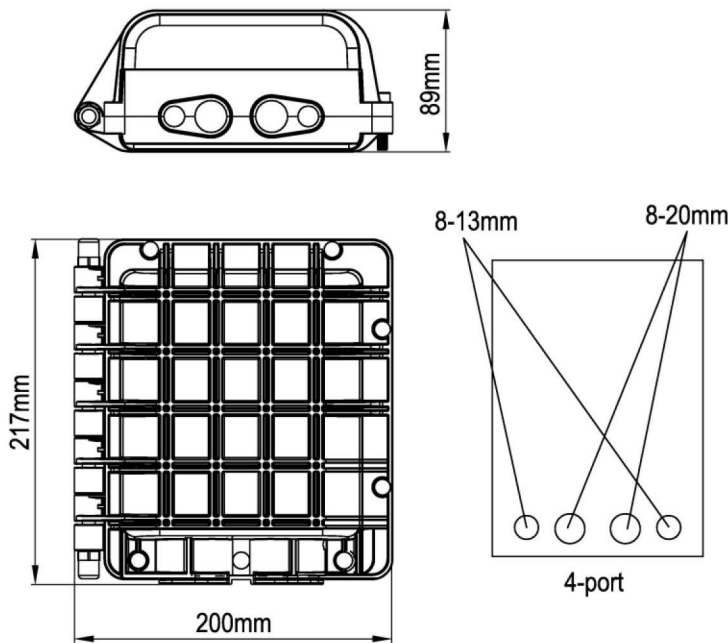
Features

- Advanced internal structure design
- Easy to re-enter, it never requires re-entry tool it
- The closure is spacious enough for winding and storing fibers
- Fiber Optic Splice Trays(FOSTs) are design in SLIDE-IN-LOCK and its opening angle is about 90°
- The curved diameter meets with international standard
- Easy and fast to increase and reduce FOSTs
- It is made of high-strength engineering plastic(PC), suit for temperature of -40-+65°C
- Good sealing structure with sealing ring and sealing tape

Applications

- ◆ Suitable for bunchy fibers
- ◆ Aerial, underground, wall-mounting, hand hole-mounting and duct-mounting
- ◆ It's especially applicable to FTTH optical fiber distribution

Structural Drawing



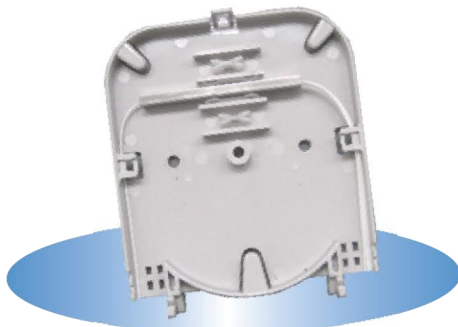
GJS-6017

Ordering Information

Optical Splice Trays



#037
110X93X10mm



#037
Splitter Tray

Type	Splice Tray Capacity	Splitter Tray (Bare /Blockless PLC Splitter)	Max. Capacity
GJS-6017 I(Bunchy)	4 pcs (12f per tray)	None	48
GJS-6017 II(Bunchy)	3 pcs (12f per tray)	1	36

Accessories

Standard Accessories:

No.	Name	Quantity	
1	Seal tape	1 roll	
2	Insulation tape	1 roll	
3	Abrasive cloth	1 pc	
4	Earthing wire	1 pc	
5	Nylon tie	1 bag	

No.	Name	Quantity	
6	Labeling paper	1 pc	
7	Aerial mounting	1 set	
8	Desiccant	1 bag	
9	Special wrench	1 pc	

Optional Accessories:

No.	Name	Quantity	
1	Pressure testing valve	1 pc	
2	Earthing deriving device	1 pc	

No.	Name	Quantity	
3	Buffer tube for bunchy fiber	1 roll	
4	Wall mounting	1 set	