



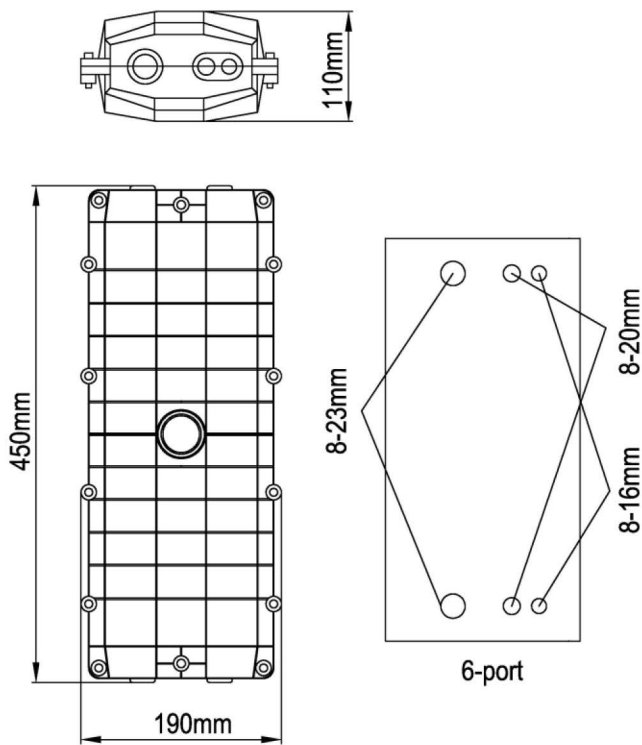
Features

- Advanced internal structure design
- Easy to re-enter, it never requires re-entry tool it
- The closure is spacious enough for winding and storing fibers
- Fiber Optic Splice Trays(FOSTs) are design in SLIDE-IN-LOCK and its opening angle is about 90°
- The curved diameter meets with international standard
- Easy and fast to increase and reduce FOSTs
- Straight-through for uncutting and branching for cutting the fiber

Applications

- ◆ Suitable for bunchy & ribbon fibers
- ◆ Aerial, underground, wall-mounting, hand hole-mounting
- Pole-mounting and duct-mounting

Structural Drawing



GJS-6015

Ordering Information

Optical Splice Trays



#002
160X122X10mm

#021
160X108X11mm

#004
180X127X14mm






Type	Fibers/Tray	Max. Capacity	Tray#	Suitable Cable Dia. allowed(mm)
GJS-6015 I(Bunchy)	6-12F	48	001	2 round ports:16mm 2 round ports:20mm 2 round ports:23mm
GJS-6015 II(Bunchy)	12-24F	96	002	
GJS-6015III(Ribbon)	36F	144	021	
GJS-6015Iv(Ribbon)	72F	216	004	

Accessories

Standard Accessories:

No.	Name	Quantity		No.	Name	Quantity	
1	Seal tape	1 roll		7	Desiccant	2 bags	
2	Insulation tape	1 roll		8	measuring paper	1 pc	
3	Abrasive cloth	1 pc		9	Special wrench	1 pc	
4	Earthing wire	1pc		10	Hexagon wrench	2 pcs	
5	Nylon tie	1 set		11	Hanging hook	1 set	
6	Labeling paper	1 pc		12	Heat shrinkable protective sleeve	1 bag	

Optional Accessories:

No.	Name	Quantity		No.	Name	Quantity	
1	Pressure testing valve	1 pc		4	Pole mounting bracket	1 set	
2	Earthing deriving device	1 pc		5	Wall mounting bracket	1 set	
3	Buffer tube for bunchy fiber	1 roll		6	Buffer tube for ribbon fiber	1 roll	